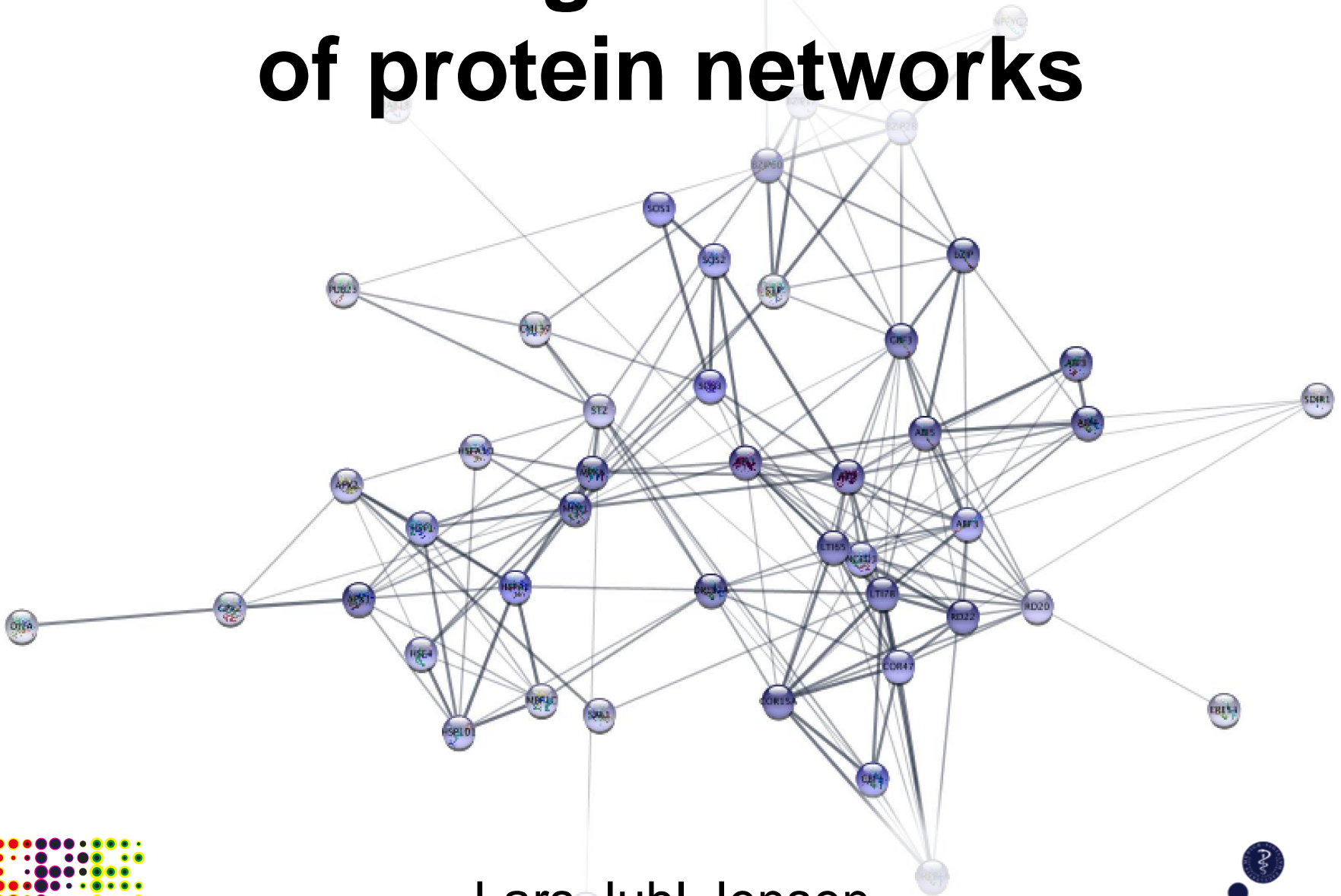


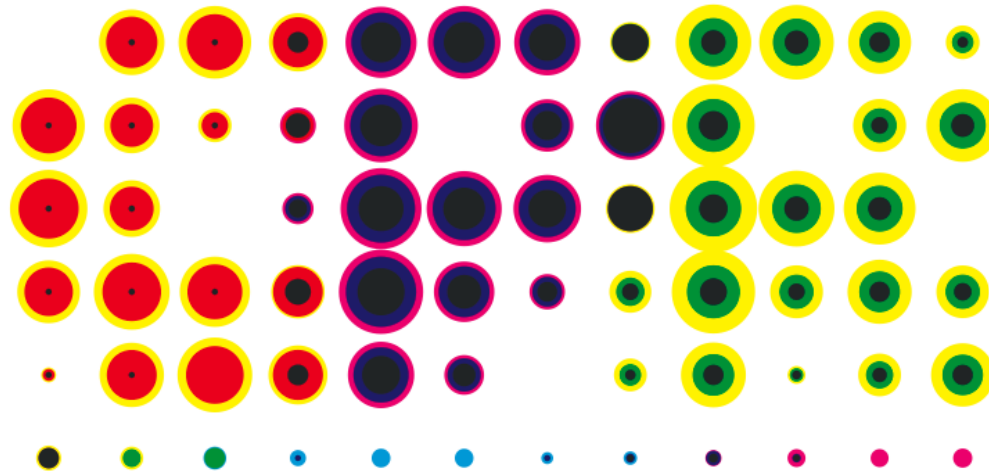
# Text-mining-based retrieval of protein networks



Lars Juhl Jensen

**me**





The Novo Nordisk Foundation

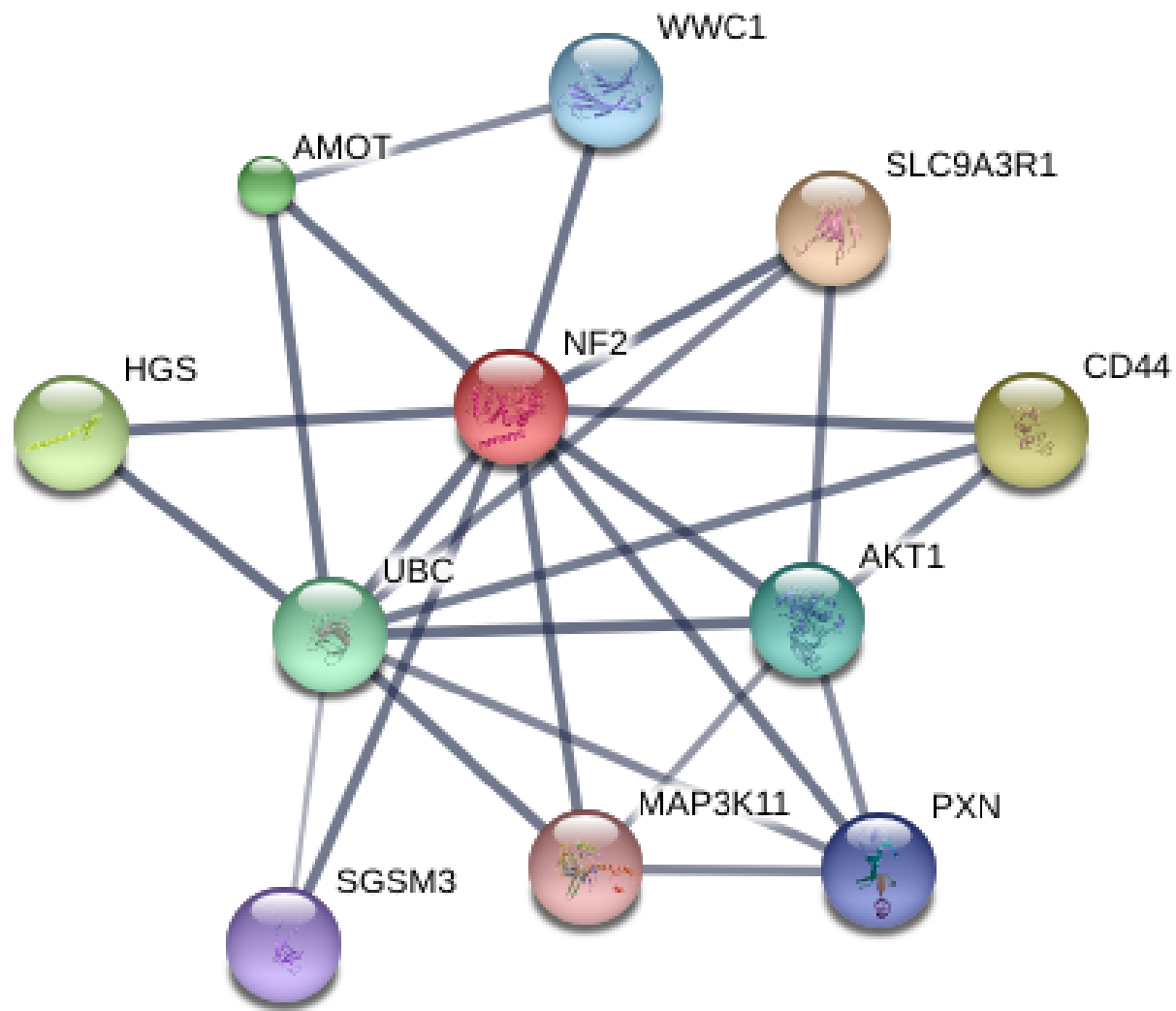
**Center for Protein Research**

The logo for 'intomics' features the word in a bold, dark blue, lowercase sans-serif font. Behind the text is a large, light blue, semi-transparent graphic consisting of several overlapping, rounded shapes that resemble a stylized DNA helix or a series of connected nodes. The word 'intomics' is centered horizontally within this graphic.

**intomics**

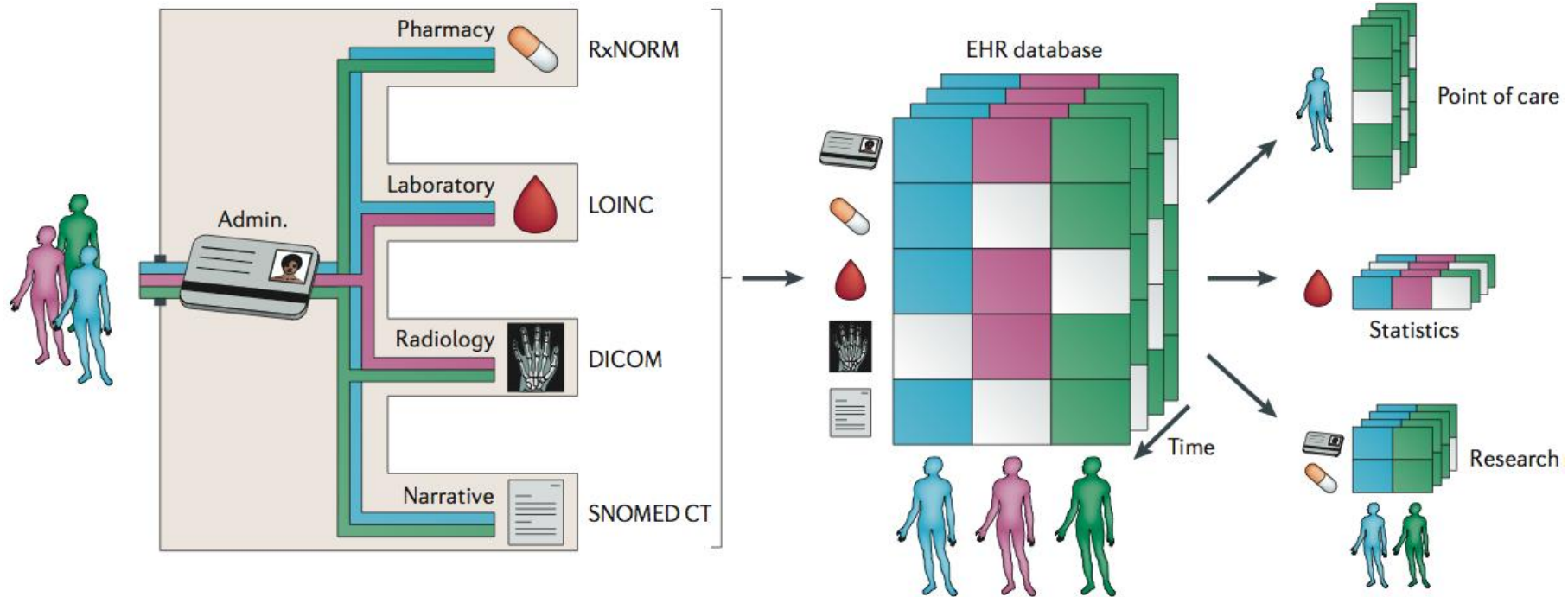
from data to biology

protein networks



medical data





**text mining**

**named entity retrieval**

topic of interest

PubMed query

**set of abstracts**

named entity recognition

foreground count



entire PubMed

background count

**enrichment score**

set of entities

**network construction**

**text mining**

data integration

**STRING**



# Cytoscape App

# Acknowledgments

John “Scooter” Morris

Nadezhda Doncheva

Sune Pletscher-Frankild

Christian von Mering

Peer Bork